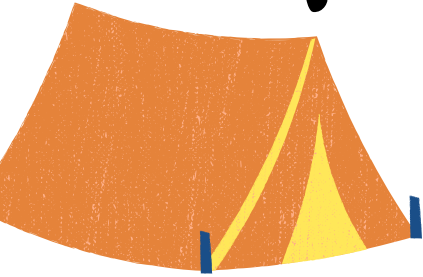
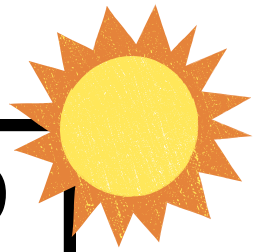


Junior 4-H



May 25-29



Camp

WHO: 4th, 5th & 6th Graders

WHERE: Clyde Austin 4-H
Center, Greeneville,
Tennessee

COST: \$400 includes meals,
transportation, lodging,
many camp activities and T-
shirt

DEADLINE: Registration &
Full Payment Due by 5pm
on April 27th



Contact us @ 423-574-1919 abower27@utk.edu

To reserve your space, return this camp registration and your \$100 deposit, or full payment of \$400.

Make checks payable to "UT Extension, Sullivan County" by **March 30th**

Name _____ Age _____ ☐ Male ☐ Female

Address _____

Street Address

City

State

Zip Code

Phone Number () - Email _____

Parent Name _____

School _____ Grade _____

T-Shirt Size _____ Adult Small, Adult Medium, Adult Large,
Adult XL..

Return completed application by April 27th to:
UT-TSU Extension - Sullivan County
140 Spurgeon Lane
Blountville, TN 37617

Ethnicity: ☐ Hispanic ☐ Non-Hispanic

Race: ☐ White ☐ Black ☐ Asian ☐ Alaskan/American Indian ☐ Pacific Islander

REGISTRATION DEADLINE & PAYMENT OPTIONS

Select from one of the following options:

- ☐ Send in full payment for \$400.00
 - ☐ Send in four (4) installments of \$100 by April 27th
 - ☐ Apply for a scholarship by March 30th
(pay the remainder of the fee after the scholarship amount is decided)
- Notification of scholarships will be mailed to the address listed above**

FOOD ALLERGIES? _____

MEDICAL CONDITION OR MEDICATION? Yes or No _____

Attention Parents: If you are interested in helping at camp as an Adult Volunteer please check here ☐

MORE INFORMATION: see back, or visit: <https://sullivan.tennessee.edu/> or
<https://clydeaustin4hcenter.tennessee.edu/>

We will also have a **mandatory Camper Orientation Meeting May 4th** to discuss any last minute details.
If you have any questions please don't hesitate to contact us.

The Clyde Austin 4-H Center near Greeneville, TN is a modern camp facility. In the air-conditioned dining hall, campers receive home-cooked, nutritious meals served cafeteria style. The contemporary-style, air conditioned dormitories provide a restful atmosphere with clean bath facilities. Accommodations for campers with disabilities are available.

Campers will also enjoy an Olympic-size pool, covered rifle range, a large recreation hall, ball fields and basketball court. Other facilities include a nature center; woodworking shop; airbrush center; craft center; and a lake where children can fish or canoe.

What to expect as a camper:

- Participate and have fun
- Enjoy good meals in the dining hall
- Do a variety of hands-on activities
- Develop friendships with your counselors and other campers
- Spend time in the swimming pool. Learn to swim if you do not already swim
- Learn about shooting sports and safety at the rifle range or archery range
- Use an airbrush machine or skill saw to make your very own projects
- Be outside and learn about nature, the environment, and wildlife
- Sing and play games around a campfire
- Make a variety of items in the craft shop

What to expect as a parent:

For your child to have a safe and happy camp experience. Thoroughly modern facilities include many safety features such as smoke alarms in each sleeping room and fire-retardant mattresses.

The kitchen and dining hall passes all Health Department inspections with good marks. Our camp is accredited by the American Camping Association which has very strict requirements. There is a first-aid station located on the campgrounds, and local hospitals provide care in case of an emergency. Medications for allergies and other illnesses are kept in a safe location and monitored by adults. It is the responsibility of the parents to notify 4-H agents of any medical conditions which may apply to their child.

Professional and summer staff receive regular training in first-aid, safety procedures and program areas. In addition to the camp summer staff and agents, there are two volunteer leaders for each 16 campers. A lifeguard and two adult chaperones for each 50 campers are on duty in the pool area during swim times

Payment Plan:

- An installment plan is available. You may reserve a space with a \$100 deposit with the balance paid in payments. The account must be paid in full by April 27th to secure a camp slot.
- Scholarships available, must be turned in by March 30th. Contact us for application or download at sullivan.tennessee.edu
- Camp fees received are non-refundable after May 11th
- Adults are invited to serve as volunteers. Applications are available from the Extension Office



What to Bring:

(examples)

- Sheets and blanket, or sleeping bag
- Toothbrush and toothpaste
- Brush/comb
- Soap/Shampoo
- Towels and washcloth
- Swimsuit
- Tennis shoes/sneakers
- Several changes of play clothing
- Sunscreen lotion
- Insect repellent
- Pre-washed 100% cotton t-shirts for tie-dying and airbrush
- Water bottle
- Luggage tag on bags

What NOT to Bring:

(examples)

- Cell Phones
- Electronic games
- Radios or CD/MP3 players
- Chewing gum
- Food
- Fireworks
- Alcohol or tobacco products
- Guns, knives (including pocket knives) or any other items which could cause harm to another camper
- Valuable and/or sentimental items

Contact us @ 423-574-1919 abower27@utk.edu